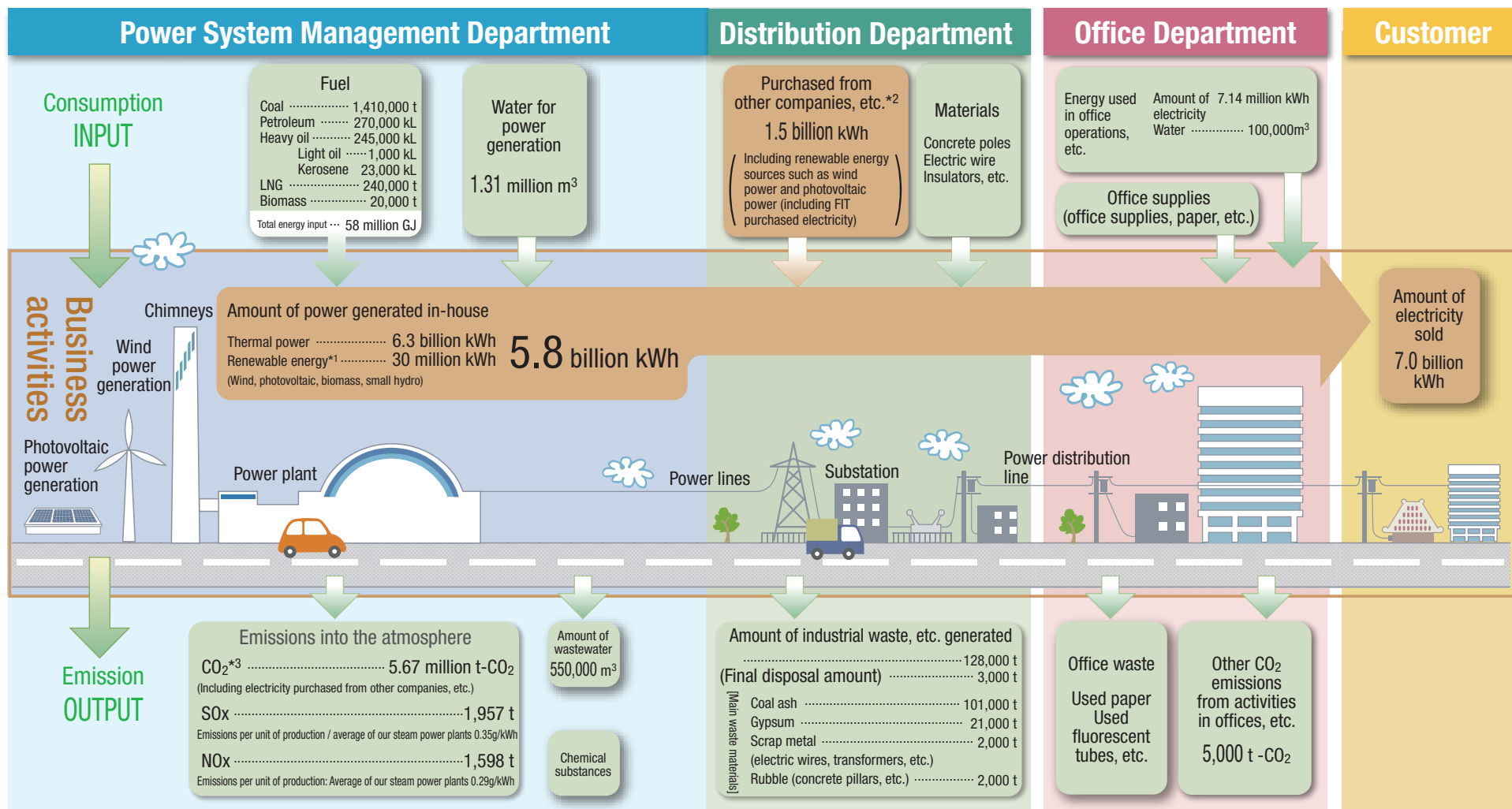


# Overview of Environmental Footprint

To deliver electricity to our customers, the Power Generation and Distribution Departments use fuels and other materials to generate electricity, and CO<sub>2</sub> and waste materials are generated. During this process. Our company strives to assess and reduce the environmental impact of our operations, including the resources used and office activities, to limit the environmental impact of our business as a whole.



\*1 The amount of electricity generated from our own renewable energy sources is the amount of electricity at the transmission end.

\*2 Including the amount of electricity received from other companies and the amount deducted from the transmission of electricity to other companies.

\*3 Estimated emissions related to the amount of electricity sold by the Company (main islands and remote islands).

◇ For more information on our environmental initiatives, please refer to our website.

📄 [Top page](#) ▶ [OPEC's Efforts](#) ▶ [Our Environmental Activities](#)

