

## Head Office

2-1, Makiminato 5-chome, Urasoe, Okinawa 901-2602, Japan  
Tel: 098-877-2341  
Fax: 098-877-6017

## Tokyo Branch

No.45 Kowa Bldg. 6F, 15-9, Minami-Aoyama 1-chome,  
Minato-ku, Tokyo 107-0062, Japan  
Tel: 03-3796-7768

## Established

May 15, 1972

## Capital

¥7,586 million

## Total Assets

¥369,232 million

## Number of Customers

731,507 (Includes users of both lighting and power)

## Number of Employees

1,552

(As of March 31, 2000)

## Power Generation Facilities

Type of Station	Number of Facilities	Generating Capacity [kW]
Steam	3	1,027,000
Gas Turbine	2	266,000
Internal Combustion	14	152,060
<b>Total</b>	<b>19</b>	<b>1,445,060</b>

## Investor Information

### Transfer Agent and Registrar

The Mitsubishi Trust & Banking Corporation  
4-5, Marunouchi 1-chome, Chiyoda-ku, Tokyo 100-1005, Japan

### Securities Traded

Tokyo Stock Exchange, Fukuoka Stock Exchange

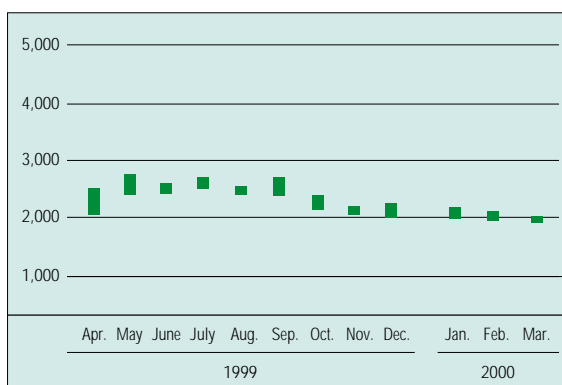
### Common Stock Issued

15,172,921 shares

### Number of Shareholders

8,533

## Stock Price Range on the Tokyo Stock Exchange [¥]



(As of March 31, 2000)

## Independent Certified Public Accountants

Tohmatsu & Co. (Deloitte Touche Tohmatsu for international work)

## Consolidated Subsidiaries

Name	Capital	Main Business Lines	Equity Ownership
Okidenko Co., Ltd.	¥130 million	Construction	48.0%
Okiden Kigyo Co., Ltd.	¥43 million	Peripheral operations related to electric power business	91.9%
Okinawa Plant Kogyo Co., Inc.	¥32 million	Peripheral operations related to electric power business	100.0%
Okinawa Denki Kogyo Co., Ltd.	¥23 million	Peripheral operations related to electric power business	99.4%
Okiden Kaihatsu Co., Inc.	¥50 million	Real estate	100.0%
Okiden Joho Service Co., Inc.	¥20 million	Information and telecommunications	100.0%
Okiden Sekkei Co., Ltd.	¥40 million	Construction	100.0%
Astel Okinawa Corp.	¥1,000 million	Information and telecommunications	69.7%
Okinawa New Energy Development Co., Inc.	¥49 million	Construction	51.0%
Okinawa Telecommunication Network Co., Inc.	¥700 million	Information and telecommunications	47.1%