

## Head Office

2-1, Makiminato 5-chome, Urasoe, Okinawa 901-2602, Japan  
Tel: 098-877-2341  
Fax: 098-877-6017

## Tokyo Branch

No.45 Kowa Bldg. 6F, 15-9, Minami-Aoyama 1-chome,  
Minato-ku, Tokyo 107-0062, Japan  
Tel: 03-3796-7768

## Established

May 15, 1972

## Capital

¥7,437 million

## Total Assets

¥338,280 million

## Number of Customers

717,592 (Includes users of both lighting and power)

## Number of Employees

1,545

## Power Generation Facilities

Type of Station	Number of Facilities	Generating Capacity [kW]
Steam	3	1,027,000
Gas Turbine	2	266,000
Internal Combustion	14	151,950
<b>Total</b>	<b>19</b>	<b>1,444,950</b>

## Investor Information

### Transfer Agent and Registrar

The Mitsubishi Trust & Banking Corporation  
4-5, Marunouchi 1-chome, Chiyoda-ku, Tokyo 100-1005, Japan

### Securities Traded

Tokyo Stock Exchange, Fukuoka Stock Exchange

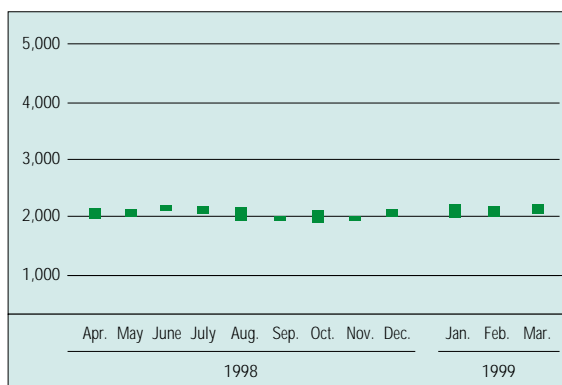
### Common Stock Issued

14,875,413 shares

### Number of Shareholders

8,042

## Stock Price Range on the Tokyo Stock Exchange <sup>(¥)</sup>



(As of March 31, 1999)

## Independent Certified Public Accountants

Tohmatsu & Co. (Deloitte Touche Tohmatsu for international work)

## Consolidated Subsidiaries

### Okiden Kogyo Co., Ltd.

Established: October 15, 1975  
Capital: ¥43 million  
OEPC's stake: 91.4%

#### Business Line:

Sales and repairs of electric machinery and equipment; leasing of vehicles and goods and contracting works; repairs and maintenance of cars; agency business for non-insurance companies

### Okinawa Plant Kogyo Company, Inc.

Established: June 1, 1981  
Capital: ¥32 million  
OEPC's stake: 70.9%

#### Business Line:

Entrusted operation of electric power facilities; contracting of electric power and machinery facilities installing

### Okinawa Denki Kogyo Co., Ltd.

Established: December 23, 1971  
Capital: ¥23 million  
OEPC's stake: 99.4%

#### Business Line:

Repairs and testing of electrical measurement instruments for OEPC; sales of equipment and materials for electric power facilities; contracting works