

Head Office

2-1, Makiminato 5-chome, Urasoe, Okinawa 901-2602, Japan
 Tel: 098-877-2341
 Fax: 098-877-6017

Tokyo Branch

No.45 Kowa Bldg. 6F, 15-9, Minami-Aoyama 1-chome,
 Minato-ku, Tokyo 107-0062, Japan
 Tel: 03-3796-7768

Established

May 15, 1972

Capital

¥7,437 million

Total Assets

¥322,663 million

Number of Customers

704,735 (Includes users of both lighting and power)

Number of Employees

1,536

Power Generation Facilities

Type of Station	Number of Facilities	Generating Capacity [kW]
Steam	3	1,027,000
Gas Turbine	2	266,000
Internal Combustion	14	151,700
Total	19	1,444,700

Investor Information

Transfer Agent and Registrar

The Mitsubishi Trust & Banking Corporation
 4-5, Marunouchi 1-chome, Chiyoda-ku, Tokyo 100-1005, Japan

Securities Traded

Tokyo Stock Exchange, Fukuoka Stock Exchange

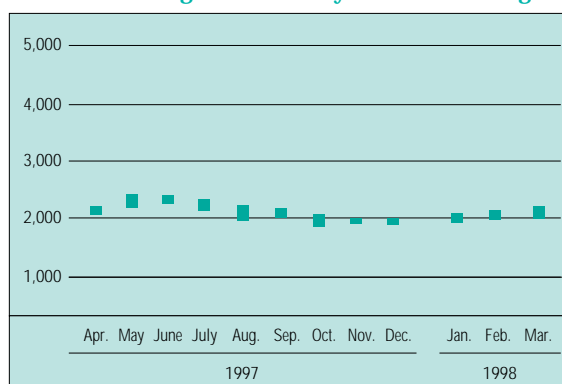
Common Stock Issued

14,875,413 shares

Number of Shareholders

7,674

Stock Price Range on the Tokyo Stock Exchange [¥]



(As of March 31, 1998)

Independent Certified Public Accountants

Tohatsu & Co. (Deloitte Touche Tohmatsu for international work)

Consolidated Subsidiaries

OKIDEN KIGYO CO., LTD.

Established: October 15, 1975
 Capital: ¥43 million
 OEPC's stake: 91.4%

Business Line:

Sales and repairs of electric machinery and equipment; leasing of vehicles and goods and contracting works; repairs and maintenance of cars; agency business for non-insurance companies

OKINAWA PLANT KOGYO COMPANY, INC.

Established: June 1, 1981
 Capital: ¥32 million
 OEPC's stake: 70.9%

Business Line:

Entrusted operation of electric power facilities; contracting of electric power and machinery facilities installing

OKINAWA DENKI KOGYO CO., LTD.

Established: December 23, 1971
 Capital: ¥23 million
 OEPC's stake: 99.4%

Business Line:

Repairs and testing of electrical measurement instruments for OEPC; sales of equipment and materials for electric power facilities; contracting works